

# KRN Services Inc.

1761 George Washington Way #383 Richland, WA 993564

## KRNI024 Integral Preamplifier Sensor

### Electrical Specifications:

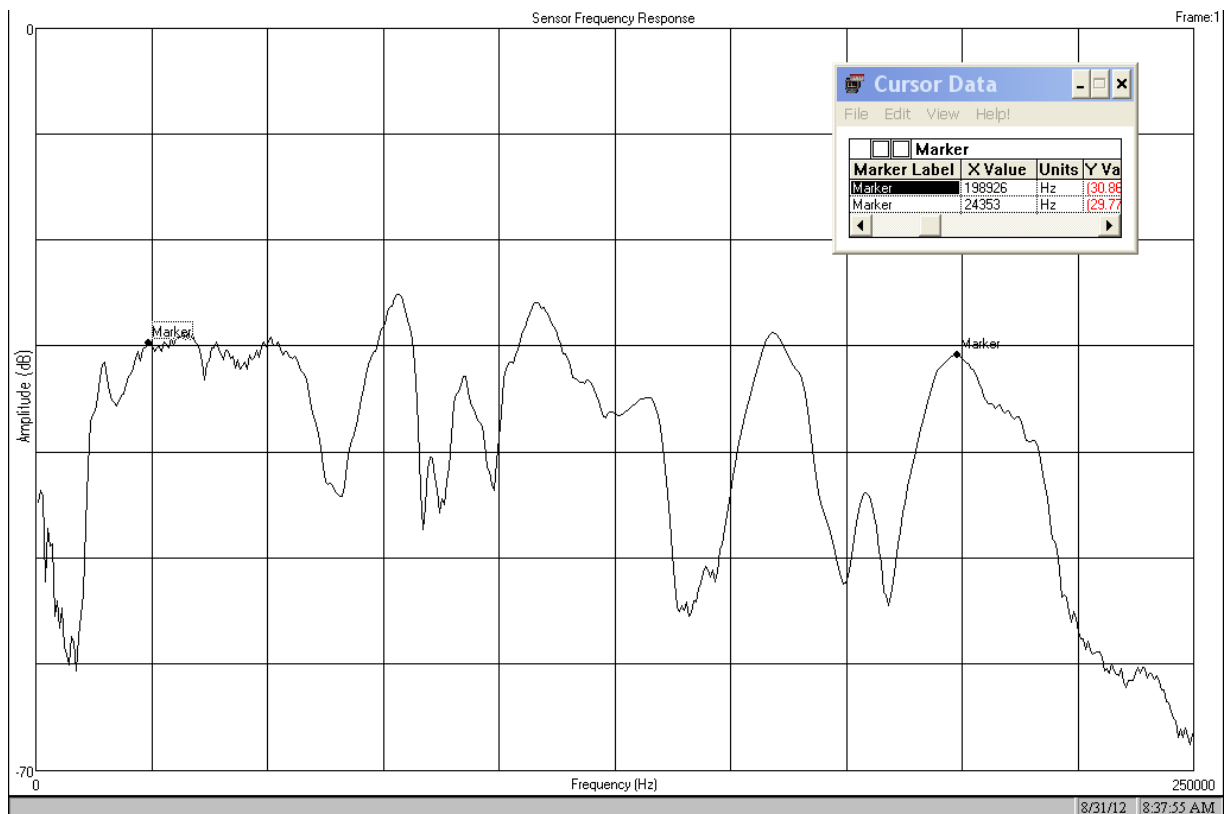
Supply Voltage: 15 to 30 VDC	Output Impedance: 50 Ohm
10 kHz High pass filtering	Temp Range: - 10 to 95°C
Gain: 40db nominal	Noise < 5mV

### Mechanical Specifications:

Dimensions: 3.08" dia x 1.4" h (78mm x 35.6mm)	Weight: 1lb 0.4oz (465 gms)
All Stainless steel construction	
Connector: Side mount female BNC	



## Typical Face to Face Sensor Spectral Response



Source Crystal: Panametrics V101

Source Voltage: Swept 11 - 250 kHz

Sweep Rep Rate = 14 mSec

Input Signal VRMS = 0.070

Represented in North and Central America by: Acoustic Technology Group, Inc;

[www.acoustictechnologygroup.com](http://www.acoustictechnologygroup.com)