

# KRN Services Inc.

## KRNI060 Integral Preamplifier Sensor

### Electrical Specifications:

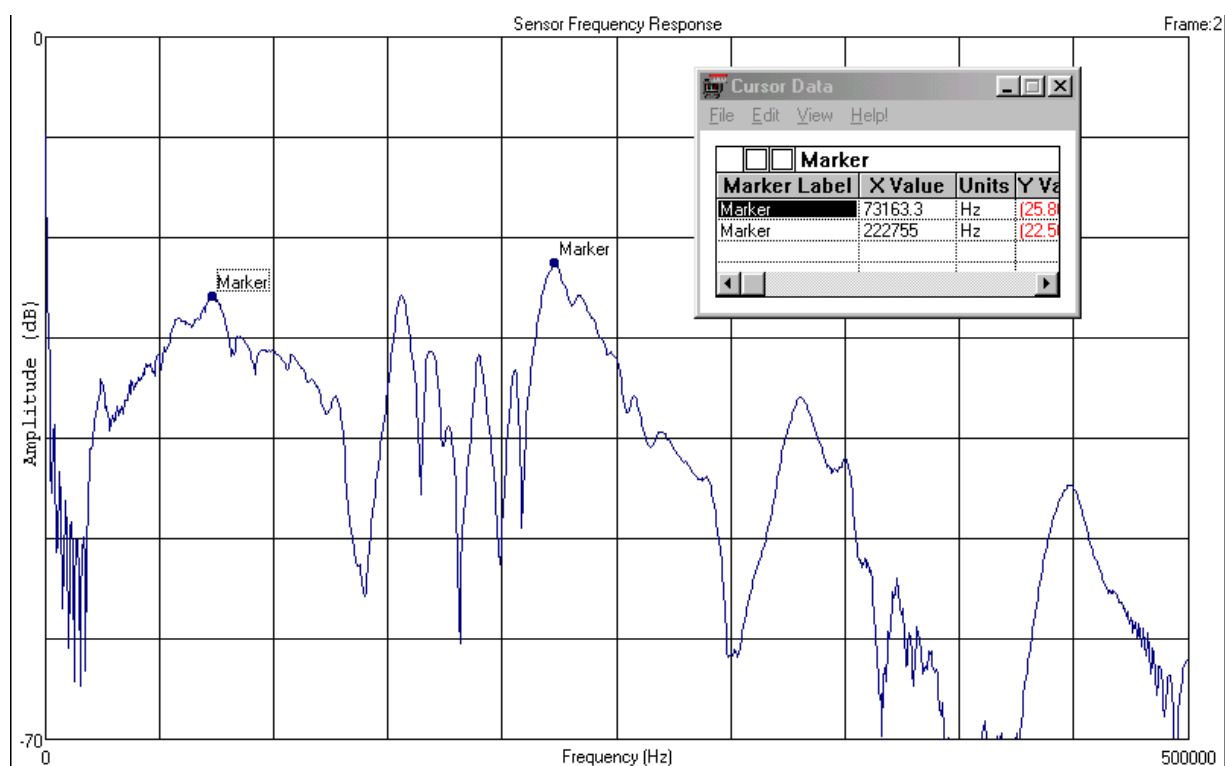
Supply Voltage: 15 to 30 VDC	Output Impedance: 50 Ohm
20 kHz High pass filtering	Temp Range: - 10 to 95oC
Gain: 40db nominal	Noise < 5mV

### Mechanical Specifications:

Dimensions: 1 1/8" dia x 1 3/5" h (28mm x 40mm)	Weight: 3.7 oz (105 gms)
All Stainless steel construction with electrically isolating epoxy face	
Connector: Side mount female BNC	



## Typical Face to Face Sensor Spectral Response



Source Crystal: Panametrics V101

Source Voltage: Swept 11 - 495 kHz

Sweep Rep Rate = 10 mSec

Input Signal VRMS = 0.070