

# KRN Services Inc.

---

## KRNm500 Miniature Sensor

### Electrical Specifications:

NA Direct connect piezoelectric

Connector: 6' Integral Coax Cable (Single ended connector provided as specified)

### Mechanical Specifications:

Dimensions:  
3/16" dia x 5/32" h  
(4.8mm x 4.0 mm)

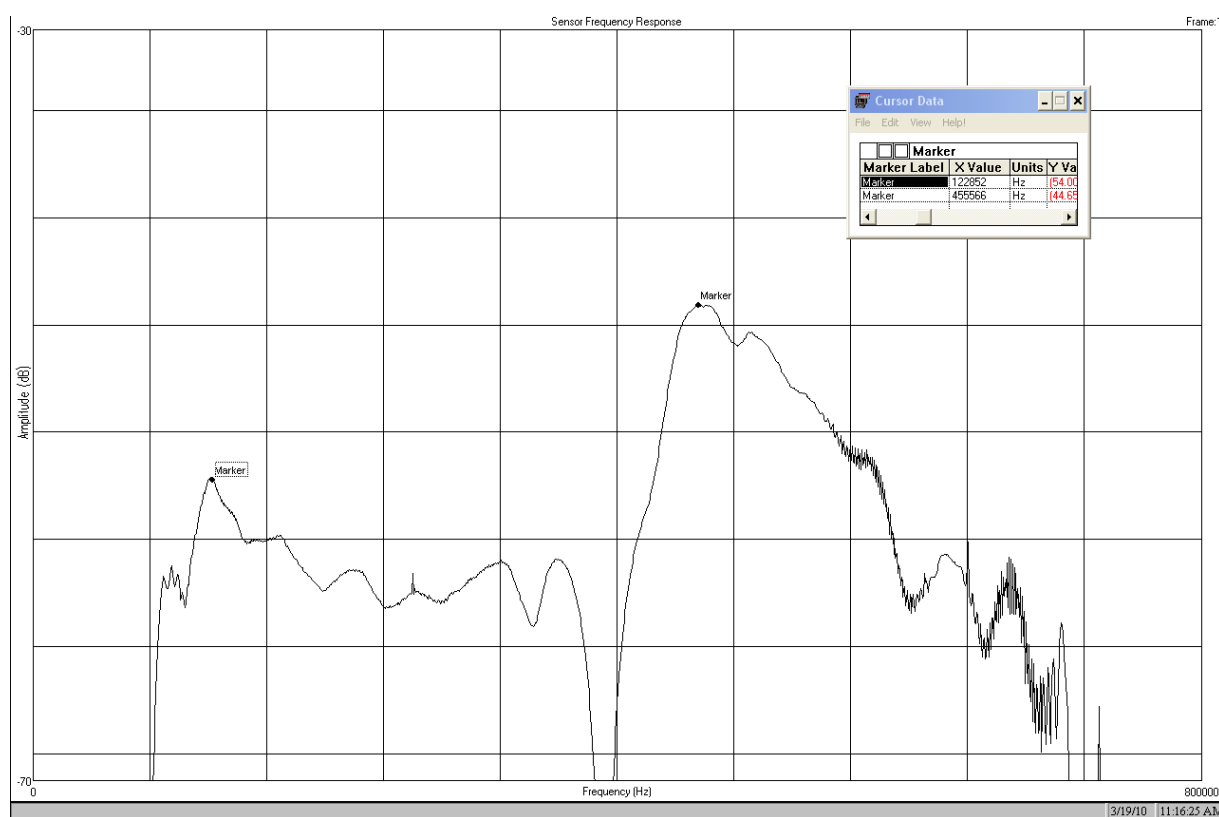
Weight  
(sensor & cable only):  
8 gms

Sensor length (OD & cable strain relief): 3/8" (9.5mm)

Epoxy Resin Construction



## Typical Face to Face Sensor Spectral Response



Source Crystal: Panametrics V101 / Source Voltage: Swept 60 - 750 kHz / Sweep Rep Rate = 14 mSec

Input Signal VRMS = 0.141mV / Preamplifier: KRN BB-01 - 40dB

---

Reach us through ATG, <http://www.acoustictechnologygroup.com>